

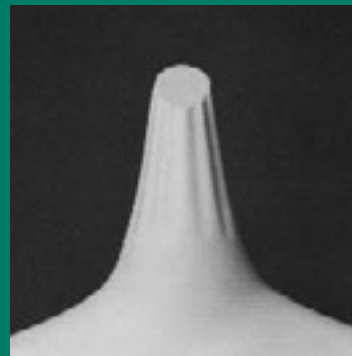
# MODI & MOLLY



**Modi**



**Molly**



**Fluted Neck**

MODEL NUMBER CHOICES	HEAD OPTIONS	FEET OPTIONS		
<ul style="list-style-type: none"> <li>• <b>M095-S</b></li> <li>• <b>M095-H</b></li> <li>• <b>M095-F</b></li> <li>• <b>M095-R</b></li> </ul>	<ul style="list-style-type: none"> <li>• <b>Modi</b></li> <li>• <b>Molly</b></li> <li>• <b>Fluted Neck</b></li> </ul>	<ul style="list-style-type: none"> <li>• <b>sculpted shoe only</b></li> </ul>	<p>ONE BODY WITH FOUR INTERCHANGEABLE ARM POSITIONS.</p> <p>ONE PIECE ARM AND HAND CONSTRUCTION</p> <p>SATIN STEEL BASE</p>	<p>ALL PRODUCTS AVAILABLE WITH CUSTOM FINISHES</p> <p>ALL MANNEQUINS AVAILABLE HEADLESS</p>

## GOLDSMITH

www.goldsmith-inc.com  
info@goldsmith-inc.com

SHOWROOM  
Studio 350, 601 West 26th Street  
New York City, New York 10001

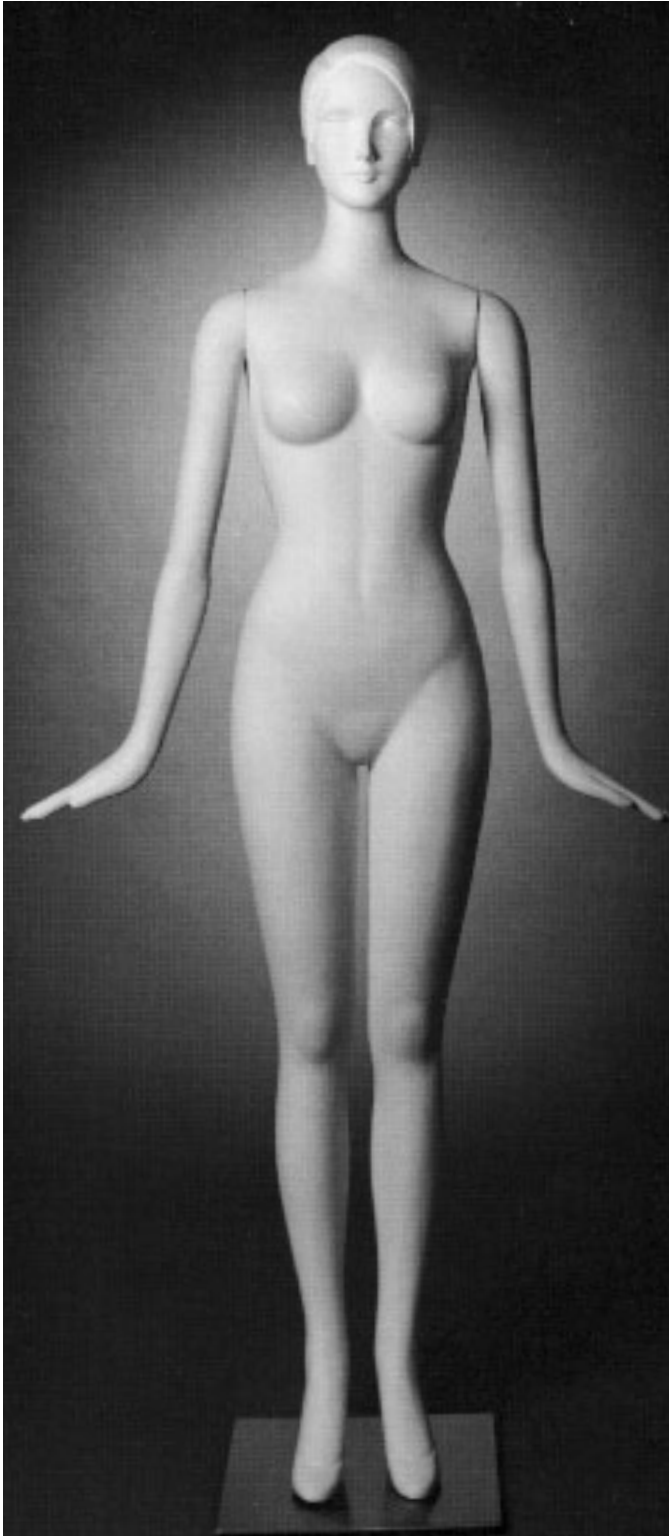
PH. 212 366-9040  
FX. 212 366-9048

mannequins	forms
fixtures	accessories
decoratives	furniture



**GOLDSMITH**

[ **MODI & MOLLY** ]



BUST  
34"

WAIST  
24"

HIPS  
35 1/2"

SIZE  
4-6

HEIGHT  
72"

SHOE  
SCULPTED

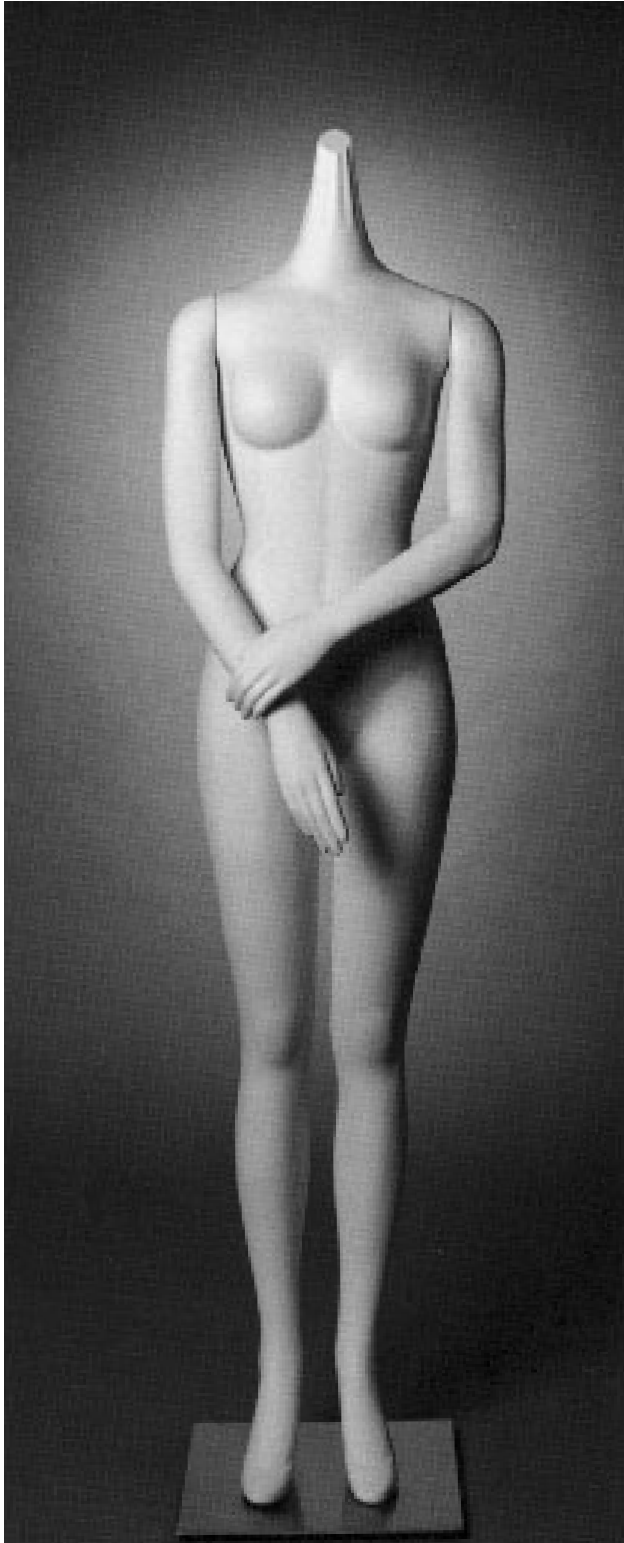
M095-S

Straight arms.

M095-H

Hip arms.

**MODI & MOLLY**



M095-F

Front arm.



M095-R

Rear arm.